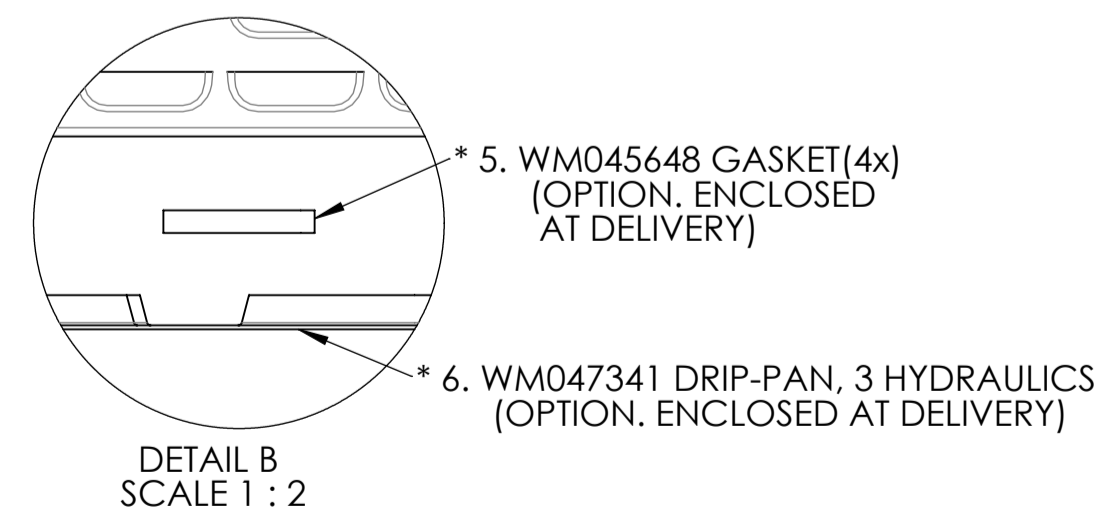
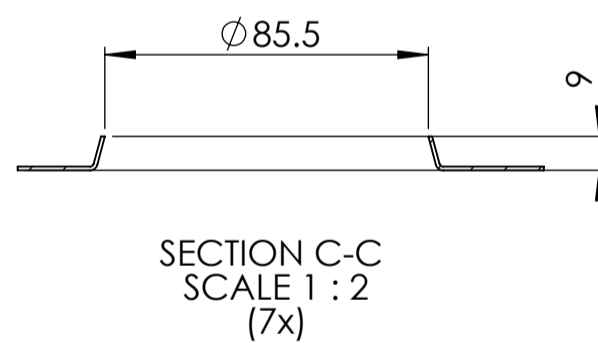
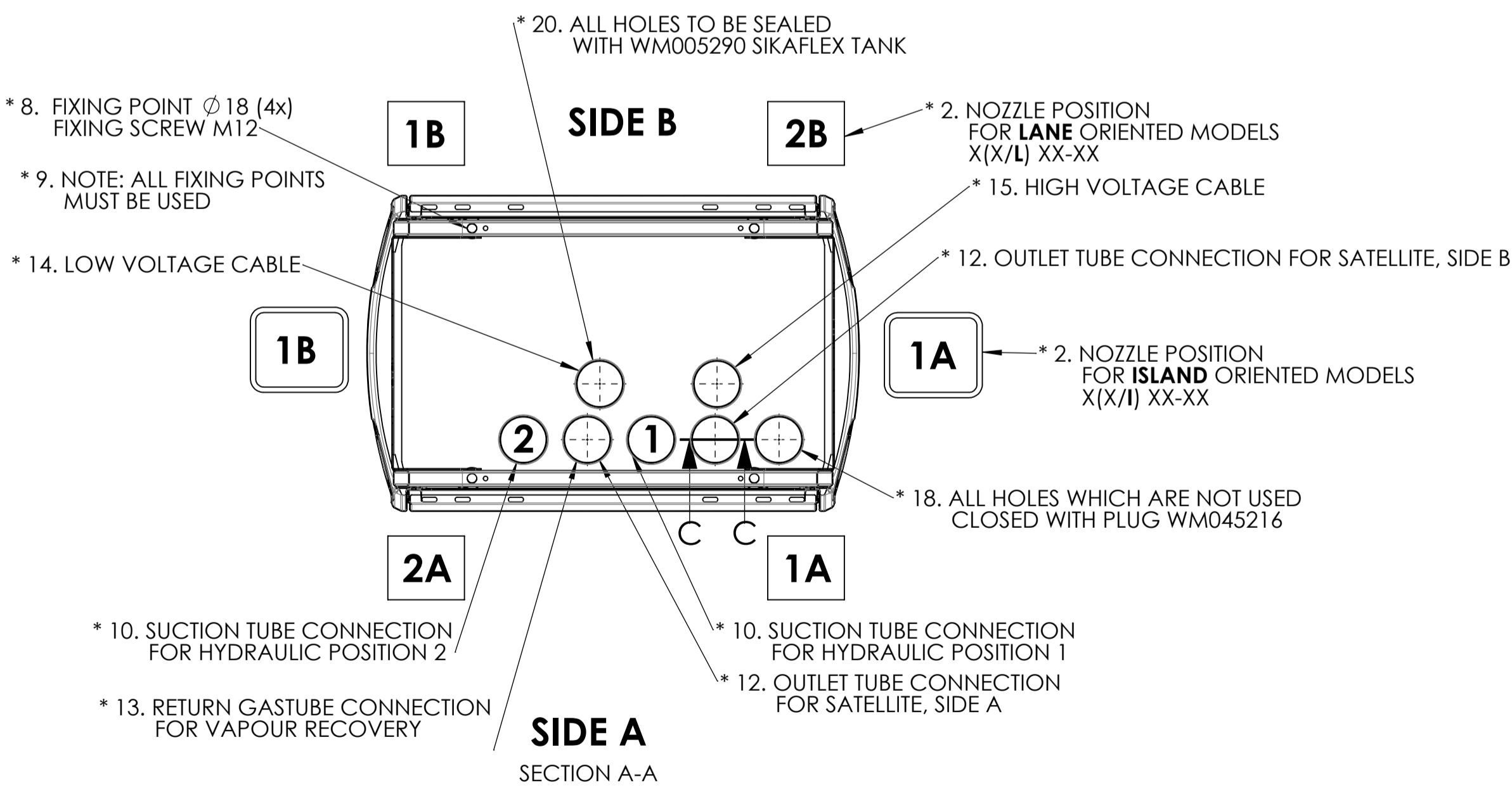
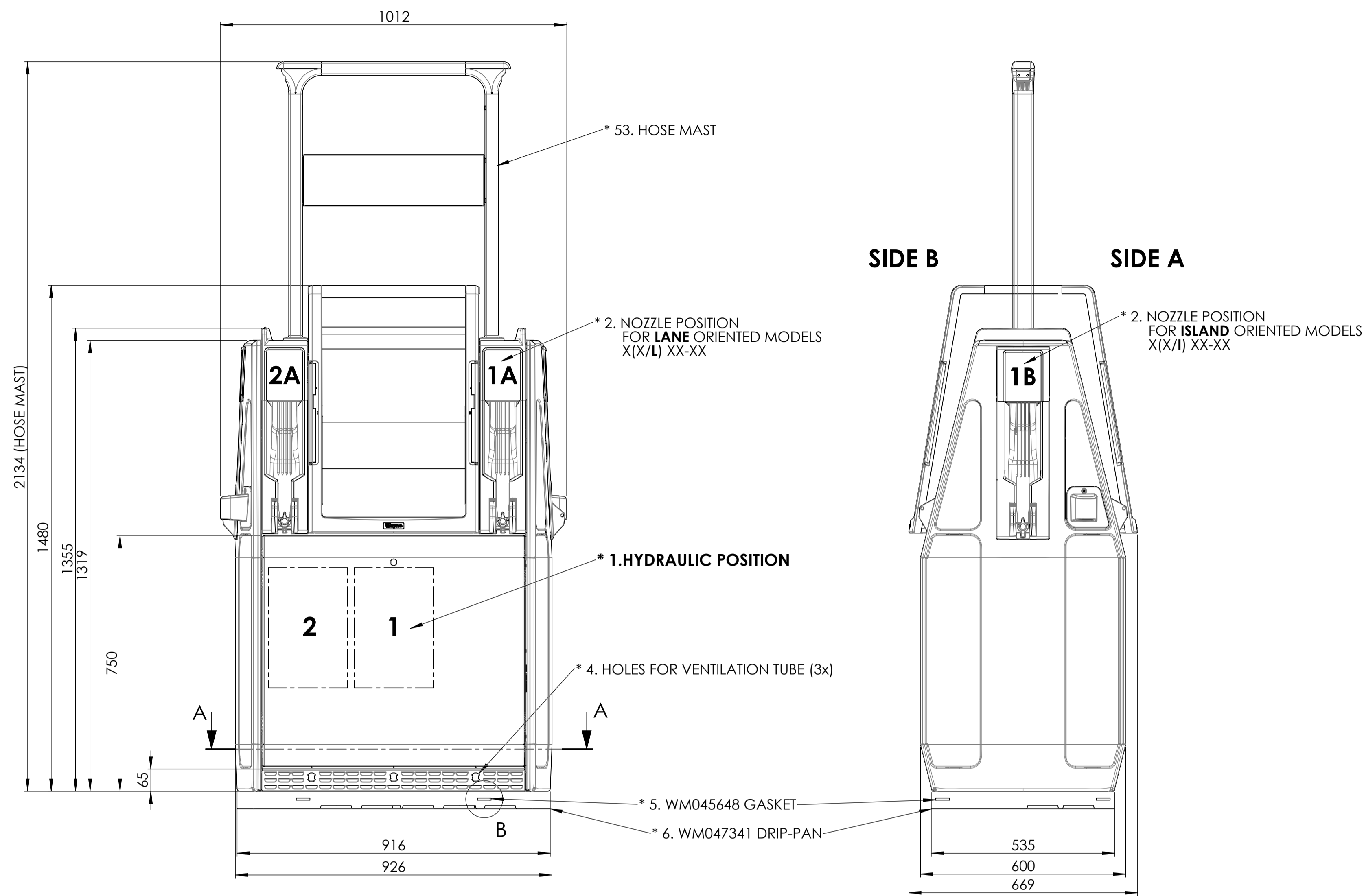


DESCRIPTION OF CHANGE  
 MODELS S(W/I) 11-210 H (180); S(W/I) 11-210 H (180) SAT and S(W/I) 11-211 H (180/70) REMOVED; OULET FOR S(W/I) 11-210 H (180)SAT REMOVED, LOGOTYPE CHANGED

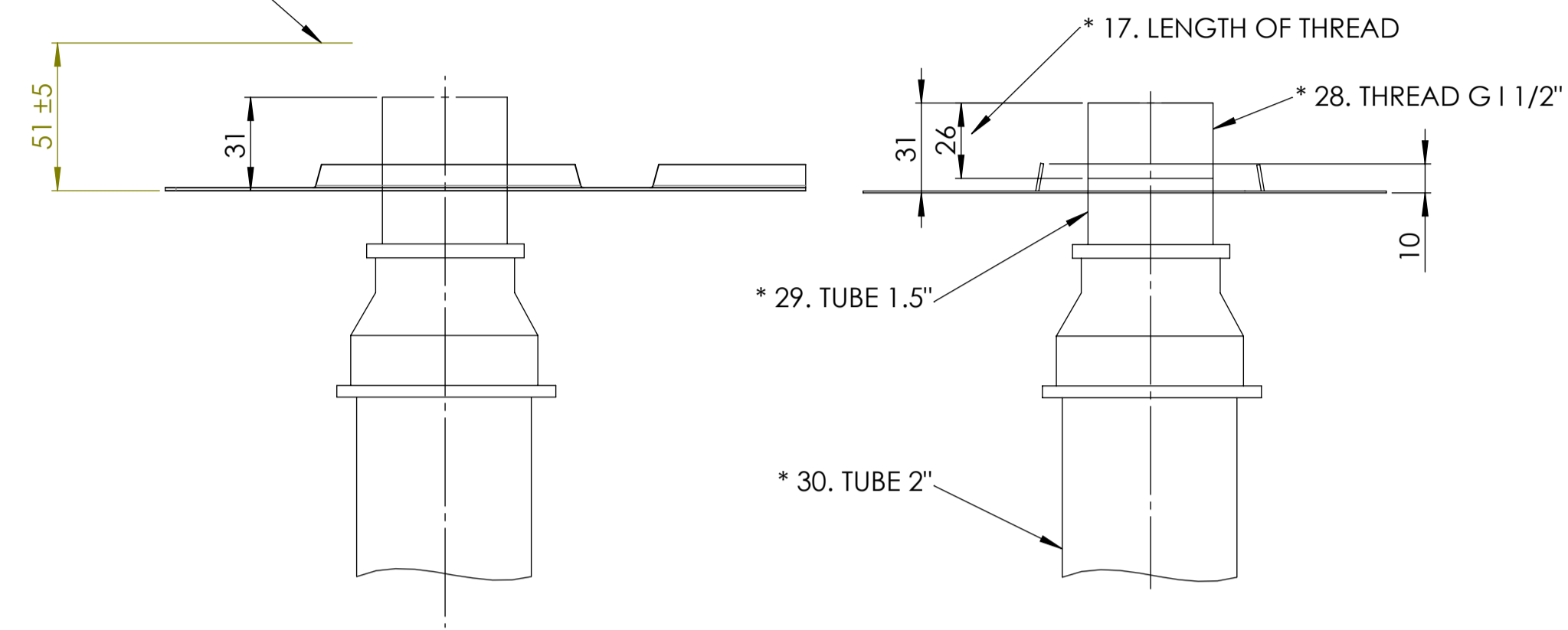


\* 23. SUCTION INLET TUBE CONNECTION FOR THE BEST CAPACITY AT SIMULTANEOUS FILLINGS, 2" TUBES ARE RECOMMENDED

\* 24. WM027491 VALVE NON RETURN (ENCLOSED AT DELIVERY)

\* 25. OPTION. GALVANIC ISOLATION WM000446 O-RING, T=3.0, ID=64.5 (ENCLOSED AT DELIVERY)

\* 26. OPTION. GALVANIC ISOLATION WM028942 RING AND WASHERS. NYLON, M8, ID=8.4, OD=18, T=2. (ENCLOSED AT DELIVERY)



\* 31. VAPOR RECOVERY PARTS ENCLOSED AT DELIVERY

\* 33. OPTION. GALVANIC ISOLATION. WB000343-0002 BUSHING PLASTIC, MALE R1/2" x FEMALE Rp3/8"(2x)

ALT.

\* 32. WB000343-0001 BUSHING MALE R1/2" x FEMALE Rp3/8"(2x)

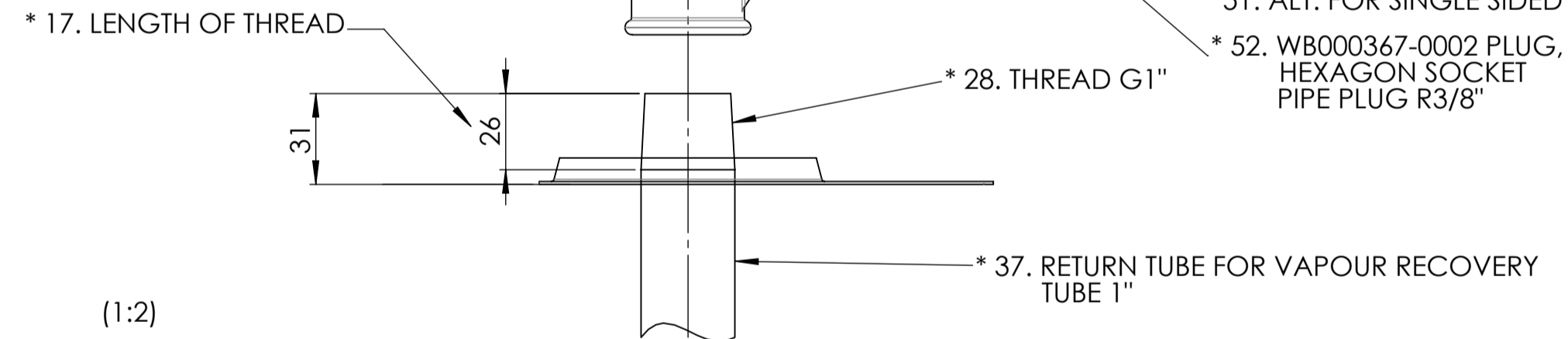
\* 34. WM020591 COUPLING, STRAIGHT, MALE G 3/8", D=10

\* 35. WB000344-0001 COUPLING, T-COUPLING FEMALE Rp1" x Rp1/2" x Rp1/2"

\* 36. WM020431 COUPLING, 90 DEGREES MALE G 3/8", D=10

\* 51. ALT. FOR SINGLE SIDED

\* 52. WB000367-0002 PLUG, HEXAGON SOCKET PIPE PLUG R3/8"



\* 38. SATELLITE PARTS ENCLOSED AT DELIVERY

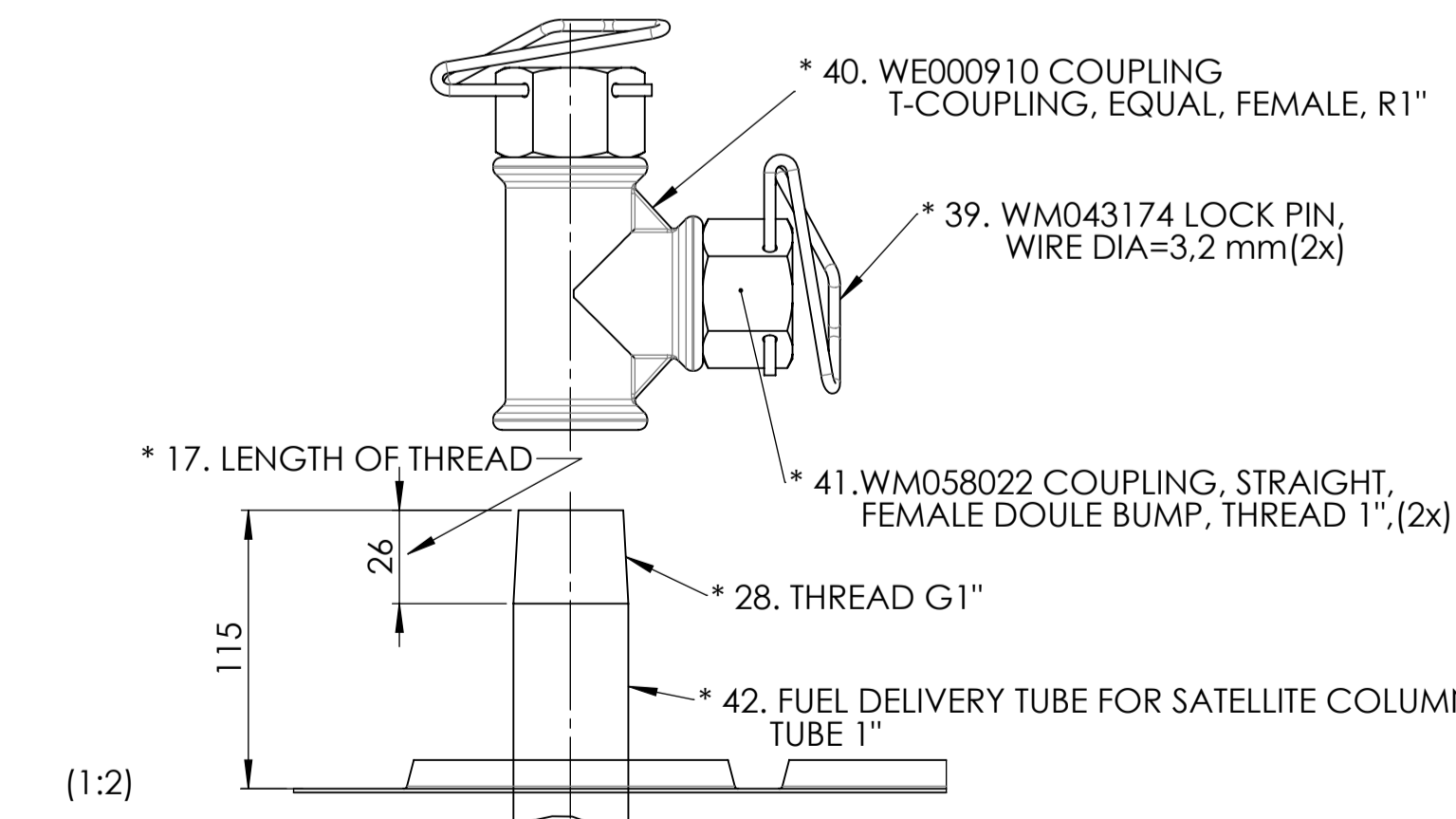
\* 40. WE000910 COUPLING T-COUPLING, EQUAL, FEMALE, R1"

\* 39. WM043174 LOCK PIN, WIRE DIA=3.2 mm(2x)

\* 41. WM058022 COUPLING, STRAIGHT, FEMALE DOULE BUMP, THREAD 1", (2x)

\* 28. THREAD G1"

\* 42. FUEL DELIVERY TUBE FOR SATELLITE COLUMN TUBE 1"



\* 16. THE HOLLOW SPACE UNDER THE PUMP IS TO BE FILLED WITH FINE COARSE SAND 0-8 OR LECA-PELLETS 2-4.

\* 21. THIS INSTRUCTION IS VALID FOR THE PUMP MODEL HELIX 2000 SUCTION

UNLESS NOTED OTHERWISE, DIMENSIONS ARE IN mm

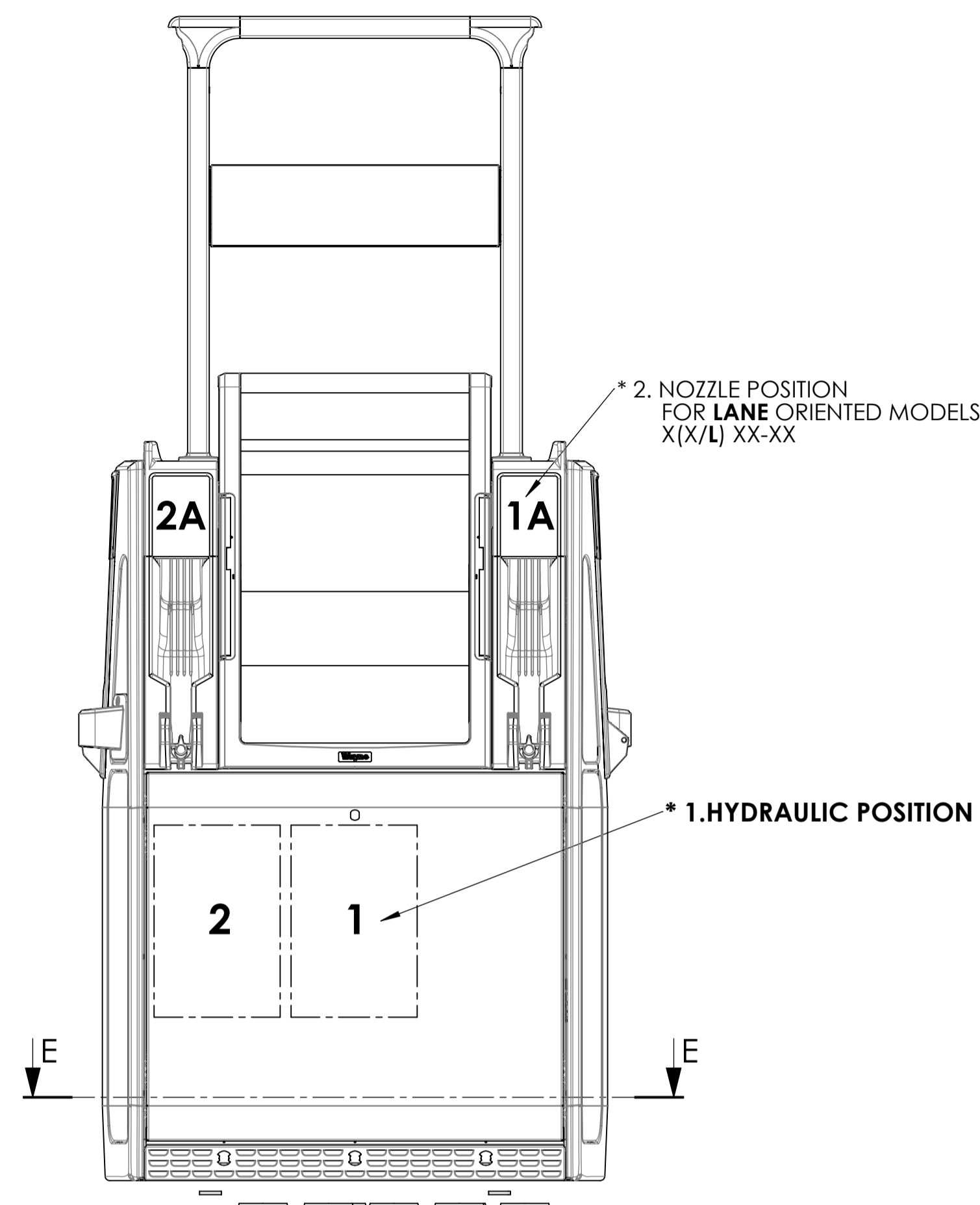
"DOVER FUELING SOLUTIONS CONFIDENTIAL INFORMATION, SUBJECT TO NDA. THE DRAWINGS, TECHNICAL DATA, AND ALL OTHER INFORMATION SET FORTH IN THIS DOCUMENT COMPRISE TRADE SECRETS AND/OR OTHER CONFIDENTIAL INFORMATION THAT IS THE PROPERTY OF DOVER FUELING SOLUTIONS UK LTD. AND/OR ITS AFFILIATE(S) AND MAY BE SUBJECT TO COPYRIGHT OR OTHER PROTECTION. ACCESS TO AND/OR USE OF SUCH CONFIDENTIAL INFORMATION IS STRICTLY CONTROLLED AND LIMITED TO THE PURPOSE(S) FOR WHICH IT IS OR WAS PROVIDED, AND NO RECIPIENT IS PERMITTED TO USE, COPY, OR OTHERWISE DISCLOSE OR TRANSMIT SUCH INFORMATION, EXCEPT AS EXPRESSLY SET FORTH IN THE APPLICABLE NON-DISCLOSURE AGREEMENT(S), OR AS OTHERWISE AUTHORIZED IN WRITING BY, OR ON BEHALF OF, DOVER FUELING SOLUTIONS UK LTD. AND/OR ITS AFFILIATE(S). ALL RIGHTS RESERVED."

APPROVED BY	07.0		
DRAWN BY	REV	DATE	ECN NO.
Harry Zimmermann			

MATERIAL	DEBURR AND BREAK SHARP EDGES	SCALE	DO NOT SCALE DRAWING		Related Drawing
THICKNESS		1:9			DRAWING NO.
SURFACE TREATMENT					WM048460
SURFACE FINISH					SHEET 1 OF 2
GENERAL TOLERANCE					
REPLACED BY					
TITLE					
INSTALLATION INSTRUCTION					
HELIX 2000, IEC, SUCTION (1-2 HYDRAULIC UNITS)					

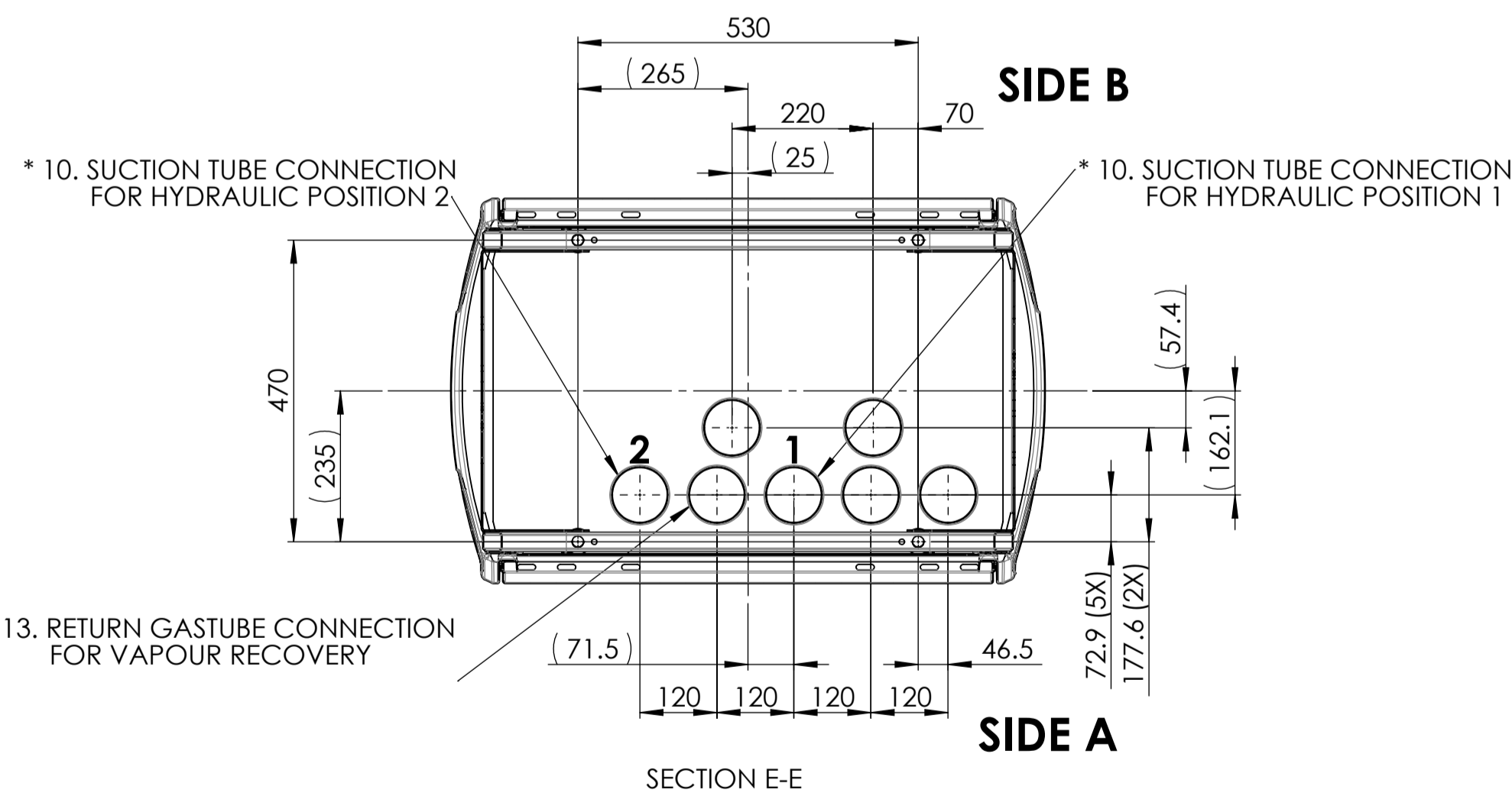
DESCRIPTION OF CHANGE

MODELS S(W/I) 11-210 H (180); S(W/I) 11-210 H (180) SAT and S(W/I) 11-211 H (180/70) REMOVED; OULET FOR S(W/I) 11-210 H (180)SAT REMOVED, LOGOTYPE CHANGED



\* 21. THIS INSTRUCTION IS VALID FOR HELIX 2000 SUCTION MODELS WITH 1-2 HYDRAULIC UNITS ACCORDING TO DOCUMENT ( HYDRAULIC CONFIGURATIONS WM042531 )

Model	Flow Rates L/min	Equip. Sides (NOZZLE)	Nozzle Position	Hydraulic
S(X/I) 11-11S	40/40	A + B	1A + 1B ISLAND	1
S(X/I) 11-110S	40	A	1A ISLAND	1
S(X/I) 11-210S 90	90	A	1A ISLAND	1
S(X/I) 11-210S 120	120	A	1A ISLAND	1 + 2
S(X/I) 11-210S SAT	120	A	1A ISLAND	1 + 2
S(X/I) 22-211S	40/40	A + B	1A + 1B ISLAND	1 + 2
S(X/I) 11-211S 120/40	120/40	A + B	1A + 1B ISLAND	1 + 2
S(X/I) 11-211S 120	120/120 (90 SIM)	A + B	1A + 1B ISLAND	1 + 2
S(X/LU) 11-11S	40/40	A + B	1A + 1B LANE	1
S(X/LU) 11-21S 120	120/120 (90 SIM.)	A + B	1A + 1B LANE	1 + 2
S(X/L) 11-210S 120	120	A	1A LANE	1 + 2
S(X/L) 11-21S 120/40	120/40	A + B	1A + 1B LANE	1 + 2
S(X/LU) 22-22S	40/40, 40/40	A + B	1A + 1B, 2A + 2B LANE	1 + 2
S(X/LU) 22-220S	40/40	A + B	1A + 1B LANE	1 + 2



NOTE : TOLERANCES FOR CONNECTION PIPES +/-10mm

UNLESS NOTED OTHERWISE, DIMENSIONS ARE IN mm

"DOVER FUELING SOLUTIONS CONFIDENTIAL INFORMATION, SUBJECT TO NDA. THE DRAWINGS, TECHNICAL DATA, AND ALL OTHER INFORMATION SET FORTH IN THIS DOCUMENT COMPRISE TRADE SECRETS AND/OR OTHER CONFIDENTIAL INFORMATION THAT IS THE PROPERTY OF DOVER FUELING SOLUTIONS UK LTD. AND/OR ITS AFFILIATE(S) AND MAY BE SUBJECT TO COPYRIGHT OR OTHER PROTECTION. ACCESS TO AND/OR USE OF SUCH CONFIDENTIAL INFORMATION IS STRICTLY CONTROLLED AND LIMITED TO THE PURPOSE(S) FOR WHICH IT IS OR WAS PROVIDED, AND NO RECIPIENT IS PERMITTED TO USE, COPY, OR OTHERWISE DISCLOSE OR TRANSMIT SUCH INFORMATION, EXCEPT AS EXPRESSLY SET FORTH IN THE APPLICABLE NON-DISCLOSURE AGREEMENT(S), OR AS OTHERWISE AUTHORIZED IN WRITING BY, OR ON BEHALF OF, DOVER FUELING SOLUTIONS UK LTD. AND/OR ITS AFFILIATE(S). ALL RIGHTS RESERVED."

APPROVED BY	07.0		
DRAWN BY	REV	DATE	ECN NO.
Harry Zimmermann			

MATERIAL	DEBURR AND BREAK SHARP EDGES	SCALE	DO NOT SCALE DRAWING		Related Drawing DRAWING NO. <b>WM048460</b> SHEET 2 OF 2
THICKNESS		1:9			
SURFACE TREATMENT		TITLE			
SURFACE FINISH		INSTALLATION INSTRUCTION			
GENERAL TOLERANCE		HELIX 2000, IEC, SUCTION (1-2 HYDRAULIC UNITS)			
REPLACED BY					